



Frogston

Primary



Headteacher's Welcome

Dear parents and carers,

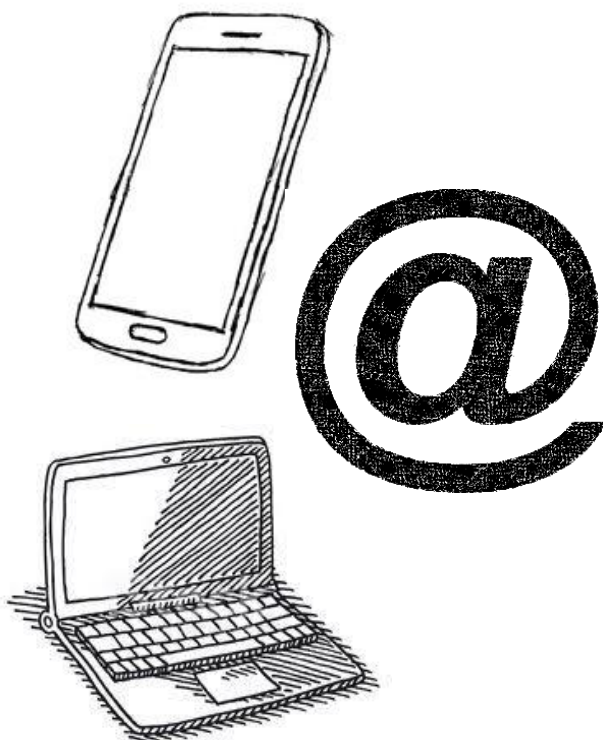
Welcome to Frogston Primary School. Frogston is a primary school in South East Edinburgh established in August 2020. The school is situated within the new housing development to the south of Frogston Road East with an outstanding new building and extensive, beautifully landscaped grounds. We use our environment, both indoors and out, to promote excitement, innovation, creativity and independence in all teaching and learning opportunities. The school has experienced rapid growth over the past three years and we are about to have an extension added. This work will be carried out within the 2024- 2025 session. This will increase the capacity from 420 pupils to 620, alongside an early learning and childcare facility with capacity for 120 pupils.

In August 2024 we expect to have sixteen classes from Primary 1 to Primary 7 with around 450 pupils. We also have our Enhanced Support Base included as part of Frogston Primary School. An Enhanced Support Base is a specialist class within a mainstream school to support children who have a language and communication disorder. Spaces in the base are allocated centrally and prioritised according to need.

Further information about enrolment and the life of our school can be found in the rest of this leaflet. Should you want more information, please do not hesitate to get in touch. Contact details can be found below.

Best wishes,

Lorraine Lawrie



Contact details

Head Teacher: Lorraine Lawrie
lorraine.lawrie@frogston.edin.sch.uk

Business Manager: Elaine O'Donnell
elaine.odonnell@ea.edin.sch.uk

Administrator: Roisin Forrester
admin@frogston.edin.sch.uk

Phone: 0131 529 3738

School Times

All start	8.45am
P1-2 Finish	2.50pm (Mon-Thur) 12.10pm (Friday)
P3-7 Finish	3.10pm (Mon-Thur) 12.20pm (Friday)

School Uniform

Our uniform is a purple jumper/cardigan, with grey trousers/dresses/ shorts and white shirts/polo shirts. Uniform items with the school badge are available from Borders Embroidery Uniforms.

<https://www.border-embroideries.co.uk/>

Parent Council

We have an amazing and dedicated Parent Council. They would love to hear from you and would be happy to answer any questions you may have. Please feel free to get in touch on the email address below

frogstonparentcouncil@outlook.com

You can also visit their Frogston Primary School Parent Forum Facebook page.

Lunches

All children in P1-P5 are entitled to free school meals.

We use ParentPay for lunch selections and payments. ParentPay account activation details will be issued when the children join us in August.

Breakfast Club

Our breakfast club runs each morning from 7.45-8.45am at a cost of £1 per day per pupil. If you would like to reserve a place at Breakfast Club, please contact the email below:

admin@frogton.edin.sch.uk

If you have a Free School Meal entitlement, please speak to a member of staff about a subsidised place.

After School Club

Our After School Club is managed by Daddy Day Care. To register your interest, please contact them on the email address below.

office@daddydaycareedinburgh.com



Vision, Values and Aims

We have established a happy, positive ethos and developed an environment that inspires and motivates children to develop their skills for life. We have high aspirations for all where all ambition is encouraged and achievements are celebrated. We are committed to supporting the development of the whole child and wish to foster a love of life-long learning. We are working on developing our understanding of key values such as respect, responsibility and achievement.

Play-based Approaches and Active Learning

Play-based learning and active learning approaches to teaching and learning are embedded in the design for the school building and grounds. This enables flexibility in our variety of whole-class teaching and work with smaller, differentiated or mixed-ability groups. In younger years, teachers facilitate challenge through their choice of continuous provision for play and maintain an awareness of next steps for individual children. Teachers can interact with children through play to meet these next steps in line with the children's interests and stage of development.

Further up the school, through effective use of classrooms and shared areas, all learners are enabled to apply their own creativity, transferable skills and problem-solving activity through collaborative work and engaging with digital technology. As a result, learning and teaching remains significantly play-based, exploratory and highly motivating at every stage of the learners' journey.

School Improvement

Our priority for the first three years has been focused on establishing our school ethos, vision, values and aims. We are now embedding our teaching and learning approaches to ensure inclusion, achievement, and attainment. We will continue to develop our community and partnerships not only with our families but also our community schools, local businesses, education organisations and the wider communities across the city.

